

UNKNOWN TALENT · SCOUTING REPORT #001

SCOUTING REPORT

TEVIN BREWER

POINT GUARD · UBSC RAIFFEISEN GRAZ · BSL

PG	172 cm	27	USA	2025/26
POSITION	HEIGHT	AGE	NATIONALITY	SEASON



UNKNOWN TALENT
INDEPENDENT SCOUTING PLATFORM

unknowntalent.com
Confidential Document · Season 2025/26

PLAYER OVERVIEW

This report was produced by the scouting department of Unknown Talent. The analysis draws on InStat play-type data, shot zone tracking, video review and positional benchmarking within the Austrian Basketball Superliga (BSL) to provide a complete evaluation of the player's current level and projection within European professional basketball.

"Leads the Austrian Superliga in both assists and minutes. His ability to manipulate PnR coverages and shoot 46% from three on high volume makes him a legitimate target for clubs in Germany Pro A and Spain LEB Gold."

POSITION Point Guard	HEIGHT 172 cm	NATIONALITY USA
CURRENT CLUB UBSC Raiffeisen Graz	LEAGUE Austrian Superliga (BSL)	AGE 27 (Oct 7, 1998)

IDENTIFICATION DATA



PERSONAL INFORMATION

Full name	Tevin Brewer
Date of birth	October 7, 1998
Place of birth	Fort Smith, Arkansas, USA
Nationality	American
Height	172 cm / 5'8"

ATHLETIC BACKGROUND

Current team	UBSC Raiffeisen Graz
League	Austrian Superliga (BSL)
Season	2025/26
Role	Starting PG / Primary Ball Handler
Career High (BSL)	40 points

PHYSICAL PROFILE

At 172 cm, Brewer operates at the lower end of the positional size range for a professional point guard in European basketball. His game is built on speed, change of pace and positional intelligence rather than physical dominance. Competitive and high-motor — leads the BSL in minutes played, indicating stamina and durability across a full season.

QUANTITATIVE PERFORMANCE

Average per game statistics, 2025–26 season. Source: InStat.

19.3 POINTS PER GAME Primary scoring option	8.59 ASSISTS PER GAME League leader — BSL	35:38 MINUTES PER GAME League leader — BSL	1.4 STEALS PER GAME Active on-ball pressure
46.05% 3PT SHOOTING 86 of 234 attempts	47.4% PNR POSSESSION % Highest among BSL PGs	0.92 PNR POINTS/POSS. Elite at BSL level	40 BSL CAREER HIGH Scoring ceiling

COMPARATIVE ANALYSIS

Brewer's statistical profile positions him among the elite playmaking guards in Central European basketball. Leading the Austrian Superliga in both assists and minutes reflects consistent high-level performance across a full season as the primary offensive engine of his team. His 46.05% three-point shooting on 234 attempts is the combination of a high decision-making standard and sound mechanics under defensive pressure. At this level, very few PGs combine that shooting volume with that efficiency.

METRIC	VALUE	CONTEXT
Points Per Game	19.3	Primary scoring option for UBSC Graz
Assists Per Game	8.59	League leader — Austrian Superliga
Minutes Per Game	35:38	League leader — full-season durability
3PT%	46.05%	86 of 234 attempts — high volume, high efficiency
PnR Handler Possession %	47.4%	Highest among BSL guards — InStat
PnR Points Per Possession	0.92	Elite efficiency at BSL level

COMPLETE OFFENSIVE PROFILE

BREWER OPERATES AS A MULTIDIMENSIONAL OFFENSIVE GUARD WHOSE PRIMARY ADVANTAGE IS HIS ABILITY TO MANIPULATE DEFENSIVE STRUCTURES THROUGH PACE VARIATION AND PICK & ROLL MASTERY. HIS DECISION SPEED AND COURT VISION ARE HIS MOST TRANSLATABLE SKILLS TO A HIGHER LEVEL.

FINISHING AT THE RIM

Generates contact through angles and pace manipulation rather than physical power. Effective with both hands. Uses the floater package to score over taller defenders in the paint — a critical weapon given his size. Seeks contact and draws fouls on drives consistently.

PULL-UP & MID-RANGE

Reliable pull-up off the PnR. Creates separation with a change of pace and stops on a dime. Mid-range accuracy in isolation situations adds a dimension that prevents defenders from forcing him one way. Quick release minimizes contest time.

PLAYMAKING VISION

Averages 8.59 APG — best in the Austrian Superliga. Consistently finds rollers on PnR actions, locates corner shooters on kick-outs and delivers weak-side passes on time and on target. Pre-pass reads of defensive rotations are above average for this level.

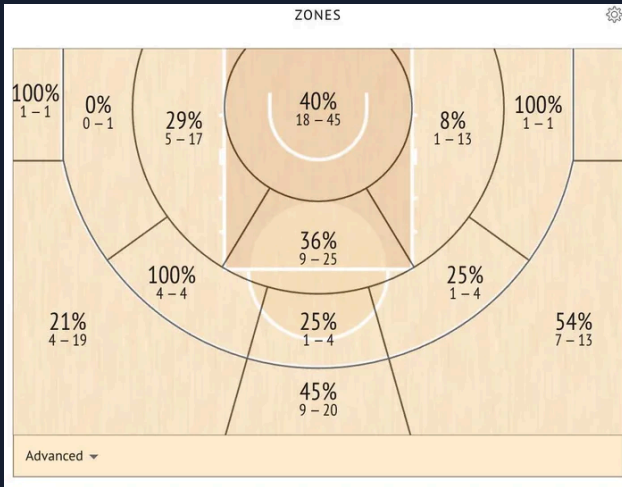
PERIMETER SHOOTING

46.05% from three-point range on 234 attempts. Forces defenders to chase him over screens, which opens driving lanes and PnR opportunities. Effective both off the catch and off the dribble. Mechanics hold under defensive pressure.

TRANSITION

Creates advantages in open court by pushing pace immediately after a change of possession. Makes quick decisions — scores or finds the open man before the defense can organize. Transition represents 9.5% of his possessions at 0.84 PPP, indicating positive but improvable efficiency in open-court situations.

ADVANCED TACTICAL ANALYSIS



HANDLER TENDENCY MAP · INSTAT · AUSTRIAN SUPERLIGA 2025/26

PICK & ROLL — HANDLER PROFILE

PnR situations account for **47.4%** of Brewer's offensive possessions — the highest concentration among BSL point guards. He generates **0.92 points per possession** as the handler, indicating elite efficiency for this level.

DIRECTIONAL TENDENCIES

The InStat map reveals a handler who attacks both sides of the floor with equal comfort. No clear directional preference makes pre-scouting defensive assignments more difficult. He initiates from the top of the key and from slot positions, creating different angles depending on defensive positioning.

COVERAGE READS

- Drop:** Pulls up for mid-range or three immediately — does not hesitate.
- Switch:** Attacks the mismatch directly — does not reset the action.
- Blitz:** Delivers quick pocket pass or skip to corner without forcing.
- Hedge:** Uses re-screen or second action effectively.

PACE & PATIENCE

Varies the speed of PnR entry — sometimes pushing pace to prevent the defense from setting coverage, sometimes slowing to allow the screener to set a harder block. This variation reflects basketball IQ above the positional average at this level.

PLAY TYPE	% POSS	POSS/G	PTS/G	PPP	TOV/G	ASSESSMENT
Pick'n'Roll Handler	47.4%	8.7	7.9	0.92	0.4	Primary weapon — elite at BSL level
Isolation	18.3%	3.4	3.3	0.99	0.2	Effective 1v1 creator — high PPP
Transitions	9.5%	1.7	1.5	0.84	0.1	Positive — occasional rushed decisions
Catch and Shoots	5.8%	1.1	0.9	0.82	0.0	Efficient spot-up option

SHOOTING TENDENCIES & ZONE ANALYSIS

Current season *		OFFENSE						DEFENSE					
Average per game *		PS	POSS	FT	PPPP	SF	TOT	PS	POSS	FT	PPPP	SF	TOT
• Pick'n'roll Handler	43.4%	8.7	39	0.92	0.4	0.6	• Catch and shoots	28.8%	3.5	3.5	1.12	0.1	0
• Isolation	38.3%	3.4	3.1	0.99	0.2	0.2	• Pick'n'roll Handler	23.8%	2.8	2.4	0.87	0.1	0.4
• Transitions	9.5%	1.7	3.5	0.84	0.1	0	• Transitions	11.2%	1.4	1.7	1.28	0.1	0
• Catch and shoots	5.8%	1.1	0.9	0.82	0	0	• Catch and drives	6.5%	0.8	0.3	0.38	0.1	0.1

SHOT ZONE CHART · INSTAT · AUSTRIAN SUPERLIGA
2025/26

SHOT DISTRIBUTION

Brewer concentrates volume at the rim and from three-point range. Mid-range is used selectively — primarily in PnR pull-up situations with a clear shooting lane, not as a default option.

ZONE TENDENCIES (FROM CHART)

- Paint / close range — efficient despite size; craft and angles over power
- Right corner three — hot zone; priority set play target for any coaching staff
- Baseline right — strong secondary production zone
- Right mid-range — average efficiency; improvable with volume
- Left wing three — cold zone; defenders should shade him left consistently

FLOATER PACKAGE

Primary finishing tool at mid-range distance when driving against length. Uses both one-foot and two-foot release depending on the defensive body — demonstrates advanced touch and footwork for a player of his size.

PERIMETER SHOOTING

46.05% from three on 234 attempts is not a small-sample outlier — it represents a full season of sustained efficiency at high volume. The volume alone forces defensive attention that creates advantages for teammates in every possession.

BREAKDOWN BY GAME SITUATION

Points per possession (PPP) and possession frequency by play type. Source: InStat. Season 2025–26.

OFFENSIVE EFFICIENCY

Brewer exceeds baseline efficiency in every tracked offensive play type. His PnR handler role generates the most possessions and the second-highest PPP. Isolation at 0.99 PPP on 3.4 possessions per game reflects a guard who creates individual advantages consistently — not just within structure. Transition at 0.84 PPP is positive but leaves room for improvement.

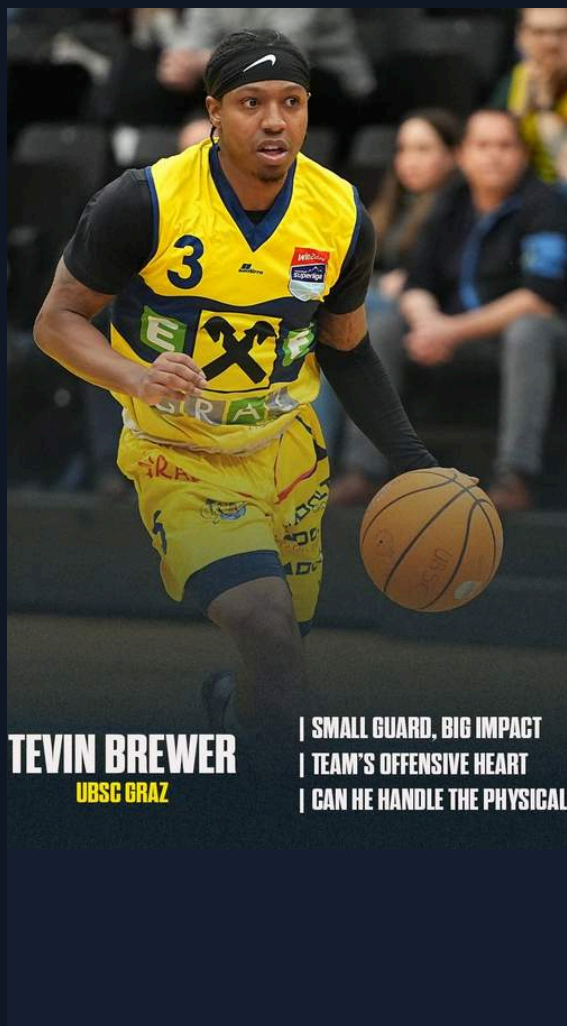
OFFENSIVE PLAY TYPE	% POSS	POSS/G	PTS/G	PPP	TOV/G	ASSESSMENT
Pick'n'Roll Handler	47.4%	8.7	7.9	0.92	0.4	Primary weapon — elite at BSL level
Isolation	18.3%	3.4	3.3	0.99	0.2	Effective 1v1 creator
Transitions	9.5%	1.7	1.5	0.84	0.1	Positive — improvable
Catch and Shoots	5.8%	1.1	0.9	0.82	0.0	Efficient spot-up

DEFENSIVE EXPOSURE

Defensively, the play-type data confirms the film observation: Brewer concedes above-average efficiency in catch-and-shoot situations (1.12 PPP), reflecting difficulty maintaining off-ball contact with shooters. Transition defense (1.28 PPP conceded) is the most concerning figure — opponents generate open shots when size mismatches occur in open court.

DEFENSIVE PLAY TYPE	% POSS	POSS/G	PTS/G	PPP	TOV	ASSESSMENT
Catch and Shoots	28.8%	3.5	3.9	1.12	0.0	Off-ball positioning issue confirmed
Pick'n'Roll Handler	22.8%	2.8	2.4	0.87	0.4	Competent on-ball PnR defense
Transitions	11.2%	1.4	1.7	1.28	0.0	Size exposed in open court
Catch and Drives	6.5%	0.8	0.3	0.38	0.1	Strong — active hands on drives

DEFENSIVE IMPACT



TEVIN BREWER
UBSC GRAZ

| SMALL GUARD, BIG IMPACT
| TEAM'S OFFENSIVE HEART
| CAN HE HANDLE THE PHYSICAL

INDIVIDUAL DEFENSE

Competitive on-ball defender. His 1.4 steals per game reflect anticipation ability and active hands in passing lanes. He reads the ball handler well and times his lunges accurately. Primary limitation is reach — at 172 cm he cannot contest shots or challenge at the rim effectively against taller players. On switches, he is consistently exploited by guards over 185 cm.

TEAM DEFENSE

Understands rotation principles and communicates on defensive switches. In PnR coverage he functions adequately under instruction — 0.87 PPP conceded as PnR defender is acceptable. The problem is off-ball: he loses contact with shooters in complex off-ball actions. The 1.12 PPP conceded on catch-and-shoot confirms attention lapses rather than physical limitation.

TRANSITION DEFENSE

The 1.28 PPP conceded in transition is the most concerning defensive figure. In open court, size disadvantages are magnified. He makes the effort to get back but cannot challenge athletically against wings running in transition. A system that prioritizes defensive balance and does not expose him in open court will minimize this risk significantly.

OVERALL EVALUATION

✓ KEY STRENGTHS

PnR mastery: The most complete PnR handler in the BSL. Reads coverages pre-action and attacks with equal effectiveness left or right.

Court vision: 8.59 APG leading the league. Finds rollers, corner shooters and weak-side passes consistently across all game situations.

Perimeter shooting: 46.05% from three on 234 attempts. Forces defensive adjustments in every possession — a genuine floor-spacing weapon.

Pace manipulation: Changes tempo to disrupt defensive timing. Hesitation, speed changes and body feints create advantages in both PnR and isolation.

Scoring range: Capable of scoring at the rim, mid-range with the floater, and from three. No single coverage eliminates him offensively.

Competitive durability: Led the BSL in minutes. High motor across a full season — does not hide from difficult matchups.

⚡ AREAS FOR IMPROVEMENT

Off-ball positioning: Loses contact with shooters in complex off-ball actions. Confirmed by 1.12 PPP conceded on catch-and-shoot. Requires focus, not athleticism.

Post-up mismatches: At 172 cm, he is a liability when switched onto bigger guards who attack the post. Opponents will target this systematically at a higher level.

Transition defense: 1.28 PPP conceded in transition is above acceptable thresholds. System must protect this exposure.

Left wing three: Shot chart confirms a cold zone on the left wing. Defenders can shade him left and limit his preferred shooting angles.

Physicality at higher level: More physical guards in Pro A or LEB Gold will create contact on drives that he may not be accustomed to absorbing consistently.

CAREER LEVEL ASSESSMENT

CURRENT LEVEL	Elite starting point guard at BSL level. Leads the league in assists and minutes. Ready to compete at a higher domestic level immediately. Impact player who controls tempo and creates for others.
BEST FIT	High-tempo PnR-heavy systems with floor spacing. Germany Pro A and Spain LEB Gold are the natural next step — environments where his offensive gifts flourish in a system tailored to his characteristics.
CEILING	Top-level second division in Europe. With defensive system protection: competitive rotation in lower-tier BBL or Betcltic Elite. Skill and IQ are not the limiting factor — physicality defines the ceiling.
FLOOR	Professional career at strong second-division level in Central or Western Europe. His offensive production and shooting efficiency ensure market value regardless of league.

LEAGUE	ROLE	FIT	NOTES
Germany Pro A	Starting PG	HIGH	PnR-heavy systems — natural fit
France NM1	Top player	HIGH	Strong fit — physical level manageable
France Pro B / Betcltic	Starter / 2nd unit	HIGH	Ideal level for immediate impact
Spain LEB Oro	Starter / 6th Man	HIGH	Creative guard profile in demand
FIBA Europe Cup	Rotation	MEDIUM	Conditional on system fit

EVALUATION SCORECARD

CATEGORY	GRADE	JUSTIFICATION
Ball Handling	A	Exceptional in PnR and at pace. Navigates traffic with comfort. Change of speed is his primary offensive tool.
Passing	A-	Elite court vision confirmed by league-leading 8.59 APG. Finds all pass types on time and on target consistently.
Shooting	A-	46.05% from three on 234 attempts. Mechanics hold under pressure. Left wing cold zone is the only consistent gap.
Pick & Roll	A+	Best PnR handler in the BSL. Reads all coverages. Attacks both sides. 0.92 PPP — elite for this level.
Transition	B+	Creates advantages pushing pace. Decision-making generally sound but occasionally rushed on clear advantage situations.
Athleticism	B+	Explosive first step and quick change of direction. Limited by height in contest situations against length.
Basketball IQ	A-	Pre-pass reads, coverage recognition, pace variation in PnR — all above average. Low turnover rate relative to usage.
Defense	C+	Competitive on-ball with 1.4 SPG. Off-ball positioning and transition defense are confirmed weaknesses via data.
Leadership	B+	Leads league in minutes. Takes responsibility as primary ball handler. High motor — does not avoid difficult matchups.

OVERALL GRADE	B+	High impact guard who can change the pace of the game. Translatable PnR and shooting skills. Defensive limitations manageable in the right system.	78% CONFIDENCE
---------------	-----------	--	--------------------------

FINAL ASSESSMENT

Brewer is a 172 cm point guard who led an entire professional league in assists and minutes. That statistical fact alone deserves attention from any front office evaluating guards at the second-division European level. The numbers reflect a player who operated as the primary offensive engine of his team for a full season, absorbing the defensive attention that position demands and still producing at a high rate.

His Pick & Roll skill set is the most transferable element of his game. At **47.4% of possessions as the handler and 0.92 PPP**, he operates at a level of coverage recognition that most guards at this level cannot match. The InStat data confirms what the film shows: he reads drop, switch and blitz coverages pre-action and makes the correct decision with consistency. That skill does not disappear when the competition level rises.

The shooting profile adds a second layer. A guard who shoots **46% from three on high volume** is a floor-spacing asset that forces defensive adjustments in every possession. Left wing is a cold zone and should be exploited defensively, but the overall profile is that of a player who can operate within a modern European offensive system at a higher level.

The primary consideration for any club is defensive. He will be exposed in post-up situations and in transition against longer players. A club that builds its defensive scheme to protect those vulnerabilities — hiding him on the opposition's weakest offensive player off-ball, limiting transition exposure through defensive balance — can use him without significant defensive cost.

Clubs in **Germany Pro A, France Pro B or NM1, and Spain LEB Gold** looking for a creative, high-usage point guard who can run a PnR-based offense should evaluate Brewer as a starting option. The size is real. The production is also real. At the right club, the production outweighs the size.

RECOMMENDATION

Highly Recommended — pace-and-space, PnR-heavy offensive systems at Pro A / NM1 / LEB Gold level.